



Regional Monitoring 2010 – Facts and Figures



Frankfurt/Rhine-Main Metropolitan Region



Summary – English Version

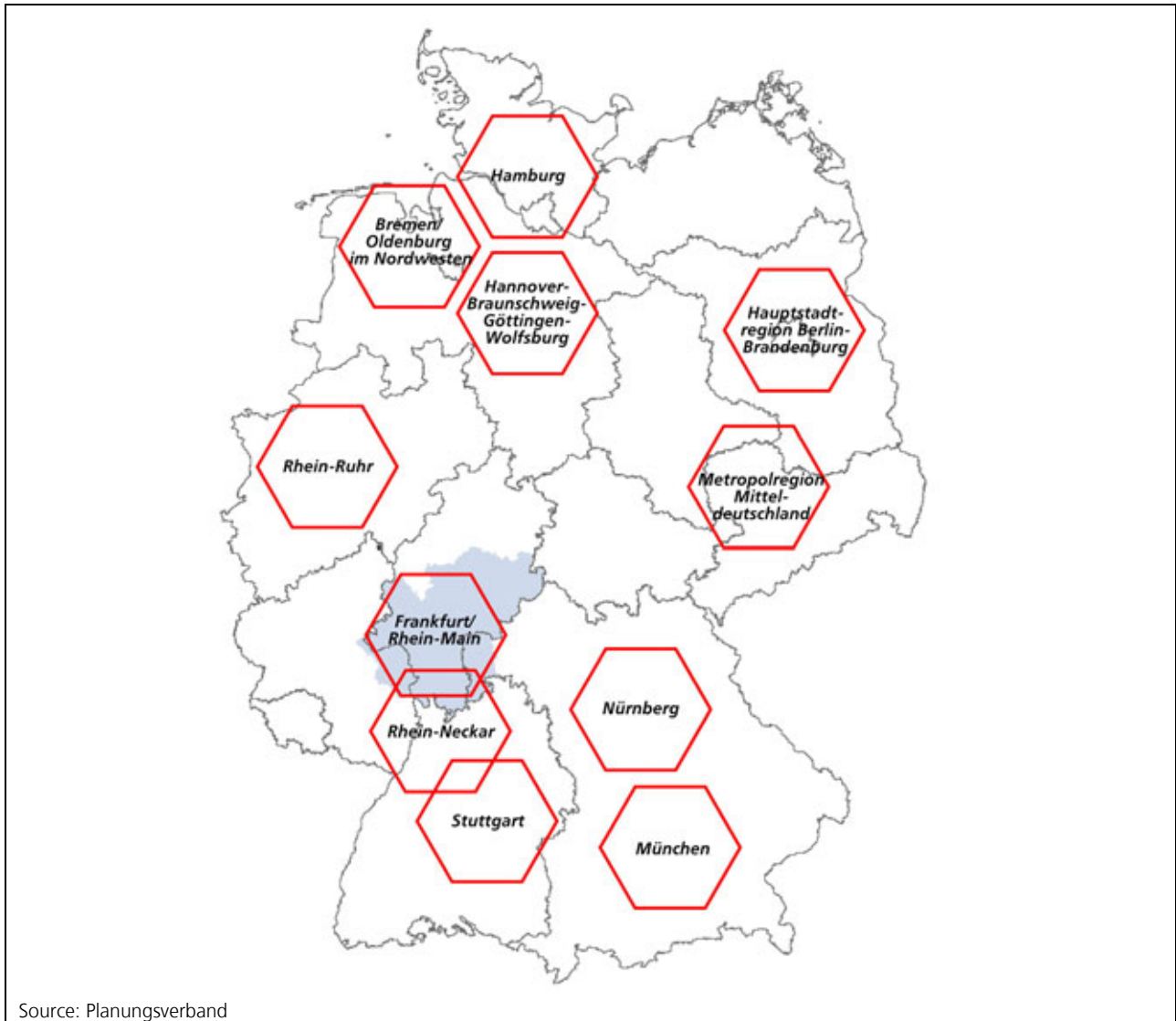


Contents

Metropolitan Regions in Germany	3
Demographic Indicators of Frankfurt/Rhine-Main	4
Economic Indicators of Frankfurt/Rhine-Main	6

This brochure and the detailed German version »Regionales Monitoring 2010 – Daten und Fakten zur Metropolregion Frankfurt/Rhein-Main« are available on the website of the Planungsverband (»Veröffentlichungen«).

Metropolitan Regions in Germany



The Frankfurt/Rhine-Main metropolitan region (see cover) is defined as the area extending from Kreis (district) Gießen to Kreis Bergstraße (from north to south) and from Kreis Mainz-Bingen to Kreis Aschaffenburg (from west to east). With its polycentric structure the region covers parts of three Bundesländer (German federal states): Hessen (Hesse), Rheinland-Pfalz (Rhineland-Palatinate) and Bayern (Bavaria).

The region includes seven *kreisfreie Städte* (urban municipalities) – Frankfurt am Main, Wiesbaden, Darmstadt, Offenbach am Main, Mainz, Worms and Aschaffenburg – and 18 *Kreise* (districts). In total 468 municipalities form the region. With almost 5.52 million inhabitants, approximately 2.87 Million jobs and a gross domestic product of 71 500 Euro per employee, the Frankfurt/Rhine-Main metropolitan region is one of the leading regions in Germany and in Europe.

According to the resolution of the *Ministerkonferenz für Raumordnung* (German Conference of Ministers responsible for Spatial Planning) on 28 April 2005, eleven regions in Germany were declared metropolitan regions. In June 2006 the Ministerial Conference passed the new »Guiding Principles and Strategies for the Spatial Development in Germany« and assigned a special importance to the metropolitan regions: these regions have »generator functions for the economic, social and cultural development«. European and global headquarters and control functions, innovation and competition functions as well as gateway and symbol functions are concentrated here.

Demographic Indicators of Frankfurt/Rhine-Main

At the end of 2009 almost 5.52 million people lived in the Frankfurt/Rhine-Main metropolitan region at their principal residence, that is 1.3 percent more than in the year 2000. This growth was due to a high positive balance of migration. Since 2000 the strongest increase in population has been recorded by the city of Mainz and the Kreis Mainz-Bingen, whilst especially the rural districts have lost inhabitants. 14.0 percent of the inhabitants are under 15 years, 66.5 percent are between 15 and 64 years and 19.5 percent are 65 years and older with an upward trend. 12.2 percent of the population in the region were of foreign nationality.

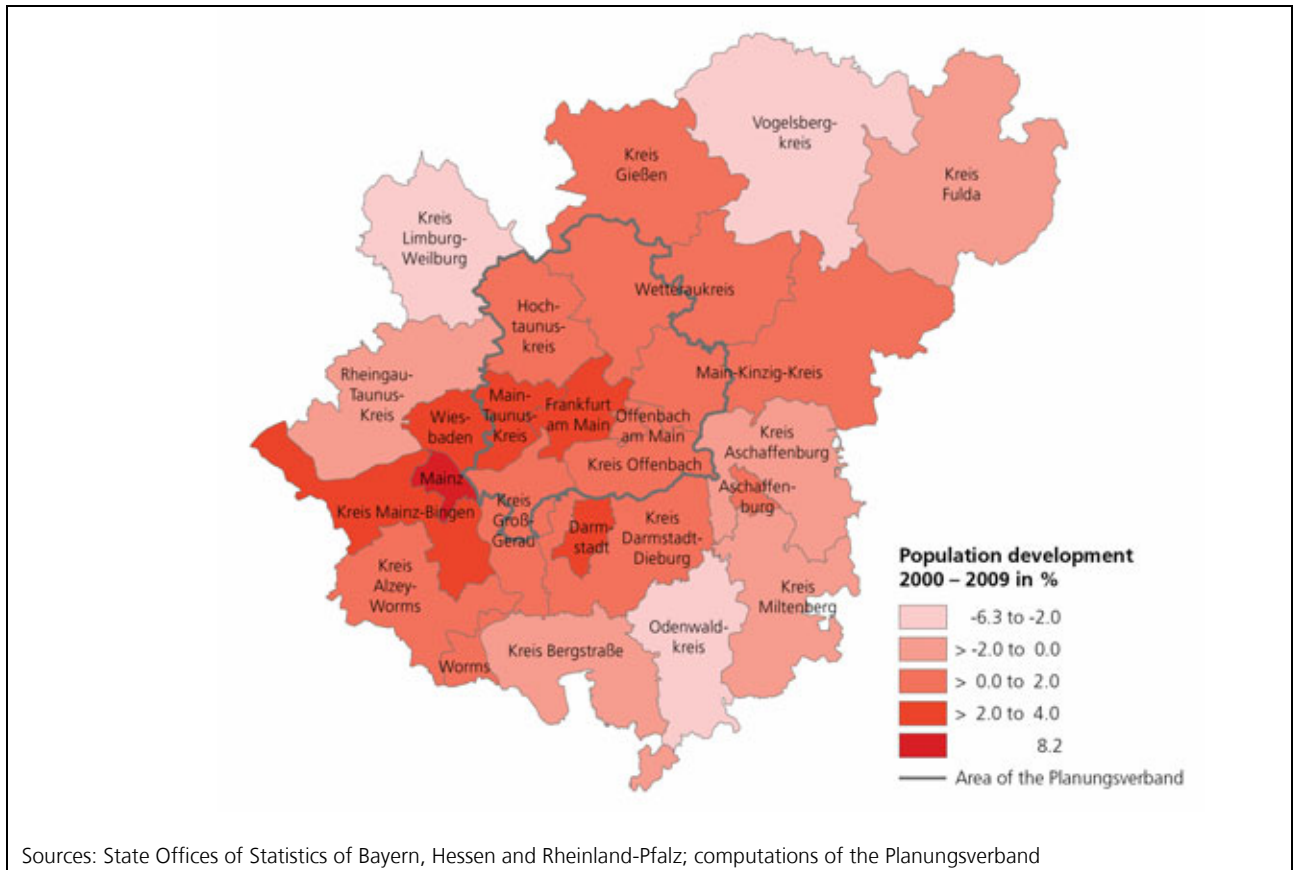
The per capita purchasing power in the region amounted to 21 073 Euro. This is 11.5 percent above the average purchasing power in Germany.

17 percent of the region are used as settlement and traffic areas, 43 percent are agricultural areas and 38 percent are forested. In 2009, the housing market within the region contains about 2.62 million apartments. Since 2000 this number has increased about 141 699 units or 5.7 percent.

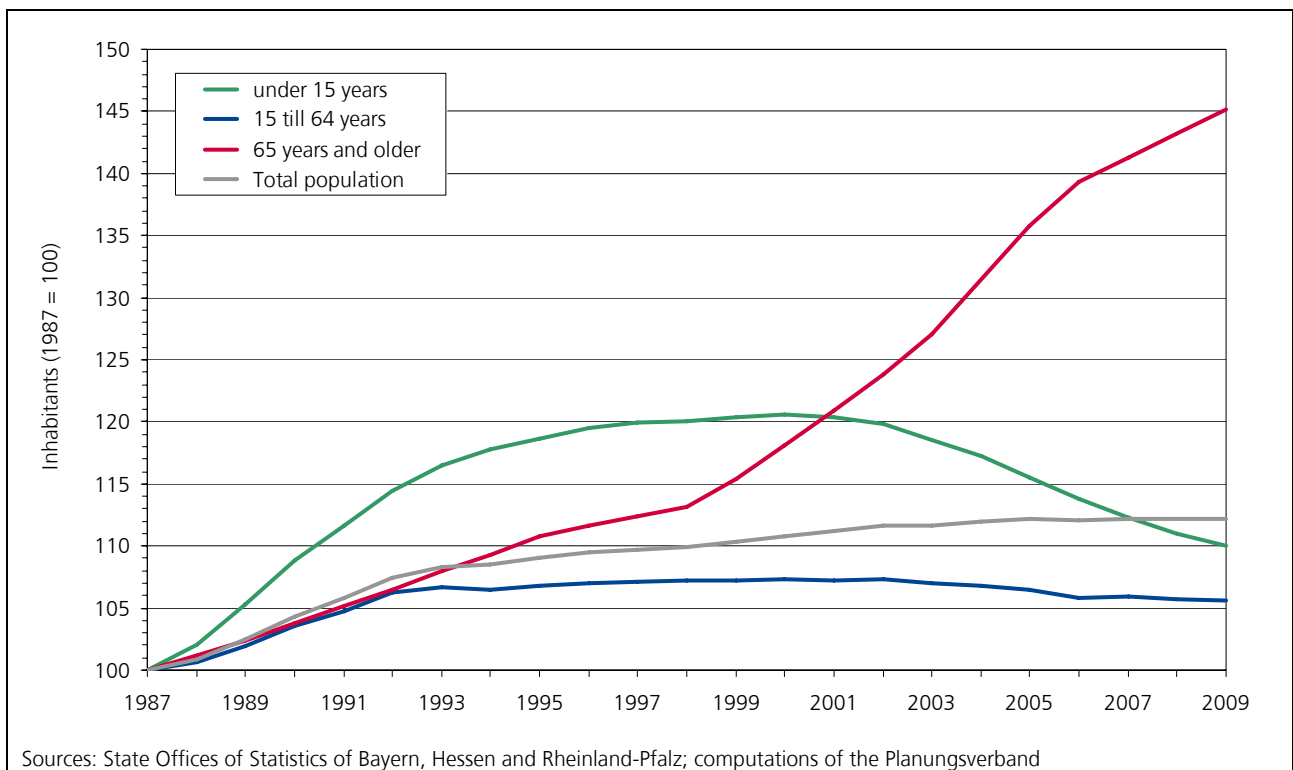
District	Inhabitants 2009	Change 2000 – 2009 in %	Natural demographic development 2000 – 2009	Migration balance 2000 – 2009	Foreign population ratio in % 2009	Purchasing power in Euro per inhabitant 2009
Hessen						
Darmstadt	143 332	3.7	-110	4 554	15.0	21 338
Frankfurt am Main	671 927	3.9	7 682	13 298	20.8	21 627
Offenbach am Main	118 770	1.1	2 089	-2 271	24.9	18 152
Wiesbaden	277 493	2.7	-587	7 579	20.1	21 461
Kreis Bergstraße	262 796	-0.4	-5 322	4 059	9.4	21 338
Kreis Darmstadt-Dieburg	288 918	0.7	-16	1 678	10.3	21 627
Kreis Fulda	217 759	0.0	-1 076	1 016	4.8	18 152
Kreis Gießen	255 765	0.9	-1 859	3 892	7.3	21 461
Kreis Groß-Gerau	253 599	1.7	383	3 345	16.9	21 029
Hochtaunuskreis	226 290	0.3	-1 979	2 260	11.6	27 426
Kreis Limburg-Weilburg	171 487	-2.2	-2 702	-1 287	7.4	18 689
Main-Kinzig-Kreis	407 022	0.3	-4 594	4 935	9.9	20 313
Main-Taunus-Kreis	226 647	2.9	2 144	4 084	12.2	26 003
Odenwaldkreis	97 502	-2.2	-2 483	198	10.1	18 438
Kreis Offenbach	337 163	0.6	1 566	-242	12.3	22 506
Rheingau-Taunus-Kreis	183 303	-0.7	-1 952	592	8.7	21 866
Vogelsbergkreis	110 989	-6.3	-4 036	-3 593	3.6	17 594
Wetteraukreis	298 179	1.3	-3 402	6 693	7.7	20 827
Bayern						
Aschaffenburg	68 722	1.7	-942	2 074	15.2	20 190
Kreis Aschaffenburg	172 990	-0.5	-653	-256	6.9	20 548
Kreis Miltenberg	129 047	-1.7	-515	-1 697	9.3	18 881
Rheinland-Pfalz						
Mainz	197 778	8.2	395	14 460	16.8	21 473
Worms	81 784	1.8	-1 216	2 624	12.6	18 483
Kreis Alzey-Worms	124 758	0.5	-956	1 524	5.8	19 943
Kreis Mainz-Bingen	201 583	3.8	36	7 379	6.7	22 472
Frankfurt/Rhine-Main Metropolitan Region	5 525 603	1.3	-20 105	76 898	12.2	21 073
among that:						
Südhessen (RB Darmstadt)	3 792 941	1.5	-6 581	50 762	13.9	21 167
Planungsverband	2 210 418	2.2	9 175	29 413	15.8	22 484

Sources: State Offices of Statistics of Bayern, Hessen and Rheinland-Pfalz; GfK GeoMarketing GmbH; computations of the Planungsverband

Population development 2000 – 2009



Development of the main age-classes in Frankfurt/Rhine-Main (1987 = 100)



Economic Indicators of Frankfurt/Rhine-Main

In the middle of 2008 there were about 2.87 million jobs in the region. There was a declining trend of 3.3 percent or 92 400 employees between 2000 and 2008. The development of the number of employees at their place of work shows great variations within the region. 77.5 percent of the jobs are available in the service sector. At the end of 2009 an average unemployment rate of 6.1 percent was registered in the region.

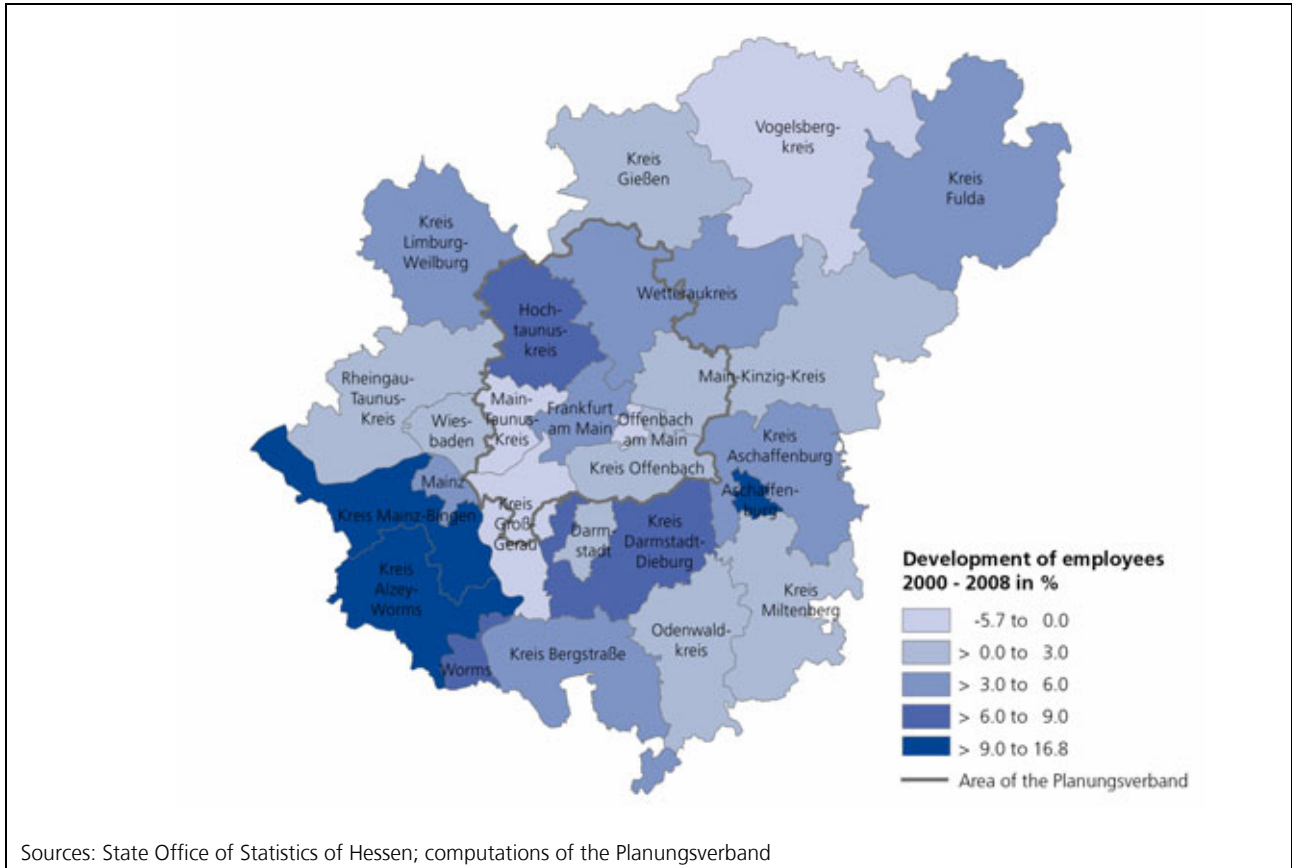
In 2008 the region generated a gross domestic product of 205 523 million Euro. Nearly 26 percent of the economic power are allotted to the city of Frankfurt am Main. In the entire metropolitan region the gross domestic product constituted nearly 71 500 Euro per employee. This was 16 percent above the average for Germany.

In 2009 approximately 20.8 million overnight stays were registered in the municipalities of the Region Frankfurt/Rhine-Main, nearly 26 percent of these were in the city of Frankfurt am Main.

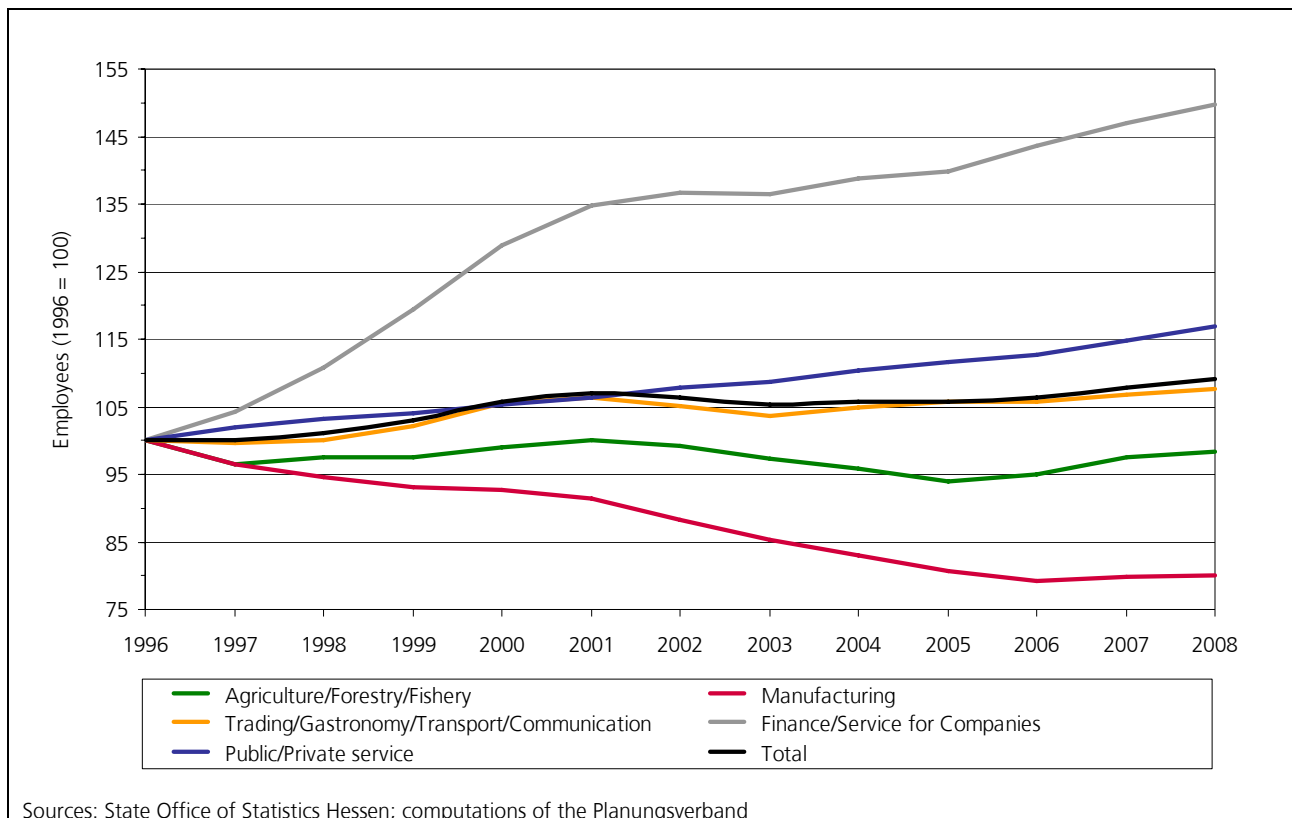
District	Employees			Unemployment rate in % 2009	Gross domestic product in million Euro 2008	Tourism – overnight stays 2009
	Total 2008	Change 2000 – 2008 in %	Service sector in % 2008			
Hessen						
Darmstadt	121 100	0.4	78.9	6.4	7 742	552 550
Frankfurt am Main	617 200	4.7	89.3	7.7	53 573	5 359 316
Offenbach am Main	64 200	-3.9	77.3	11.4	4 424	358 216
Wiesbaden	170 900	1.8	85.3	8.2	13 243	991 326
Kreis Bergstraße	100 600	4.5	71.4	5.6	6 690	688 361
Kreis Darmstadt-Dieburg	97 600	6.3	67.7	5.4	6 398	518 020
Kreis Fulda	114 900	6.0	68.2	5.3	6 929	1 400 615
Kreis Gießen	126 500	1.4	76.0	7.5	7 716	405 945
Kreis Groß-Gerau	117 800	-5.7	69.4	6.0	9 161	866 669
Hochtaunuskreis	111 100	7.6	80.3	4.0	8 520	1 182 879
Kreis Limburg-Weilburg	70 900	5.9	73.7	5.8	4 074	539 848
Main-Kinzig-Kreis	166 400	2.6	67.9	6.2	11 119	1 292 070
Main-Taunus-Kreis	108 600	-0.4	84.9	4.7	9 140	593 101
Odenwaldkreis	37 400	0.4	61.8	6.1	2 240	439 653
Kreis Offenbach	149 200	1.9	75.8	6.2	11 311	793 461
Rheingau-Taunus-Kreis	62 600	0.4	72.9	4.4	3 816	1 197 601
Vogelsbergkreis	43 700	-2.3	61.8	6.5	2 480	485 273
Wetteraukreis	112 600	3.4	72.5	5.2	7 458	1 087 065
Bayern						
Aschaffenburg	60 300	10.7	76.3	6.6	3 768	111 971
Kreis Aschaffenburg	70 400	5.2	61.6	3.6	4 434	361 055
Kreis Miltenberg	55 100	1.5	56.6	4.1	3 477	258 169
Rheinland-Pfalz						
Mainz	142 600	4.1	88.3	6.0	8 226	696 232
Worms	39 900	8.2	72.8	8.7	2 278	115 607
Kreis Alzey-Worms	42 200	16.8	71.4	5.2	2 510	106 629
Kreis Mainz-Bingen	69 300	9.8	67.3	4.4	4 797	399 334
Frankfurt/Rhine-Main Metropolitan Region	2 872 900	3.3	77.5	6.1	205 523	20 800 966
among that:						
Südhessen (RB Darmstadt)	2 037 100	2.5	79.5	6.3	154 834	15 920 288
Planungsverband	n.a.	n.a.	n.a.	n.a.	107 091	n.a.

Sources: State Offices of Statistics of Bayern, Hessen and Rheinland-Pfalz; Federal Labour Agency; computations of the Planungsverband

Development of employees 2000 – 2008



Development of the economic sectors in Frankfurt/Rhine-Main (1996 = 100)



Published by

Planungsverband Ballungsraum
Frankfurt/Rhein-Main
Poststraße 16
60329 Frankfurt am Main
www.planungsverband.de

Contact

Matthias Böss
Phone: +49 69 2577-1621
E-Mail: matthias.boess@planungsverband.de

November 2010

© 2010 Planungsverband Ballungsraum Frankfurt/Rhein-Main

